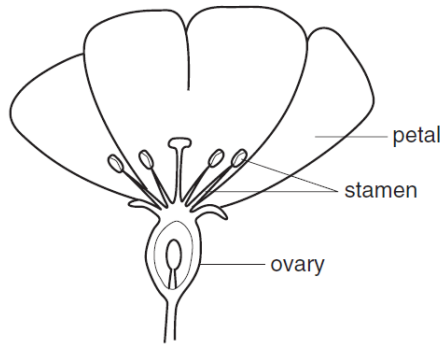


DICHOTOMOUS KEY

Time: 15 minutes

M. Marks: 15

1. The diagram shows a half-flower.



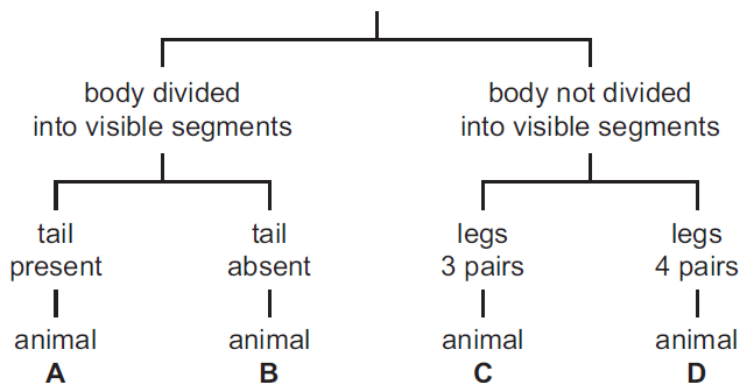
Use the following key to identify the type of flower.

1. petals attached above the ovary go to 2
 petals attached below the ovary go to 3
2. stamens less than ten type A
 stamens more than ten type B
3. sepals absent type C
 sepals present type D

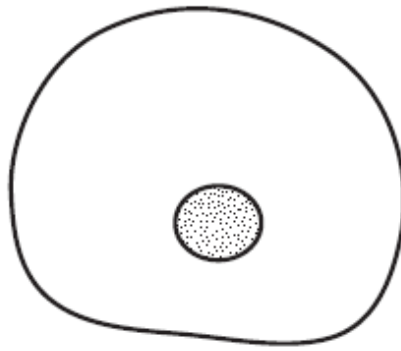
2. The diagram shows an animal.



Using the key, which animal is it?



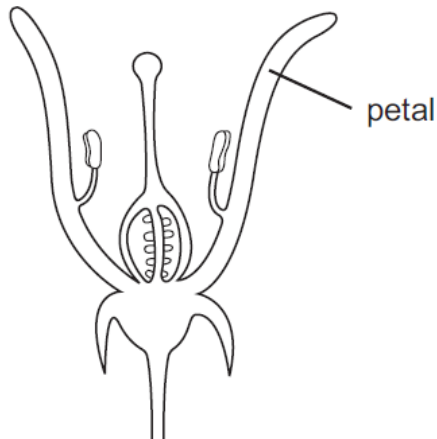
3. The diagram shows a type of cell.



Using the key below, which letter identifies the cell?

1. cell has a nucleus go to 2
cell has no nucleus go to 3
2. cell has a central vacuole A
cell has no central vacuole B
3. cell has granules inside it C
cell has no granules inside it D

4. The diagram shows a section through a flower.



Using the key, identify this flower.

1. sepals present go to 2
sepals absent go to 3
2. stamens attached to petals A
stamens not attached to petals B
3. stigma above anthers C
stigma below anthers D

5. The diagram shows part of a flowering plant.



Using the key, identify this plant.

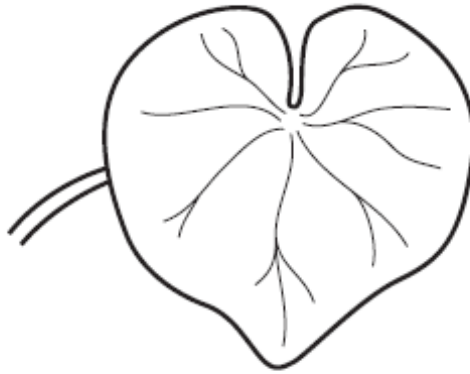
1. three petals go to 2
more than three petals go to 3
 2. leaves longer than they are wide A
leaves wider than they are long B
 3. leaves parallel-veined C
leaves not parallel-veined D
6. The diagram shows a leaf.



Use the key below. From which plant, A, B, C or D was the leaf taken?

1. leaf has a smooth edge go to 2
leaf has a toothed (serrated) edge go to 3
2. leaf has a long stalk (petiole) plant A
leaf has a short stalk (petiole) plant B
3. leaf is longer than it is wide plant C
leaf is wider than it is long plant D

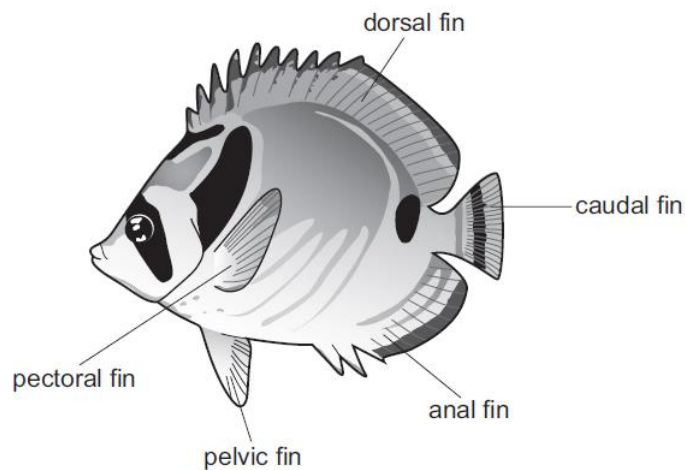
7. The diagram shows a leaf.



Use the key to identify the leaf.

1. leaf with several small leaflets go to 2
leaf with one large leaf blade..... go to 3
2. leaflets broad and flat A
leaflets narrow and hair-like B
3. leaf with smooth edge C
leaf with toothed edge D

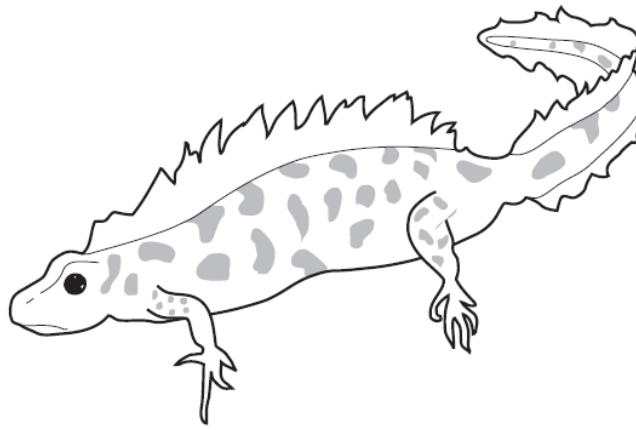
8. The diagram shows a fish.



Use the key to identify the fish.

1. black stripe across the eye go to 2
no black stripe across the eye A
2. black stripe on caudal fin go to 3
no black stripe on caudal fin B
3. black spot below dorsal fin C
no black spot below dorsal fin D

9. The diagram shows an animal.



Use the key to identify the animal.

1. front limbs with five fingers go to 2
front limbs with four fingers go to 3
2. skin with spots A
skin without spots B
3. tail with fins C
tail without fins D

10. The diagram shows an animal.



Use the key to identify this animal.

1. rounded ears A
pointed ears go to 2
2. spots on the body B
no spots on the body go to 3
3. straight tail C
curly tail D

11. The diagram shows half a flower.



The following key may be used to identify the plant on which the flower is growing.

1. Petals separate from sepals go to 2
 petals and sepals joined plant P
2. flower with four stamens plant Q
 flower with more than four stamens go to 3
3. ovary as tall as wide plant R
 ovary taller than wide go to 4
4. flower has two petals plant S
 flower has more than two petals plant T

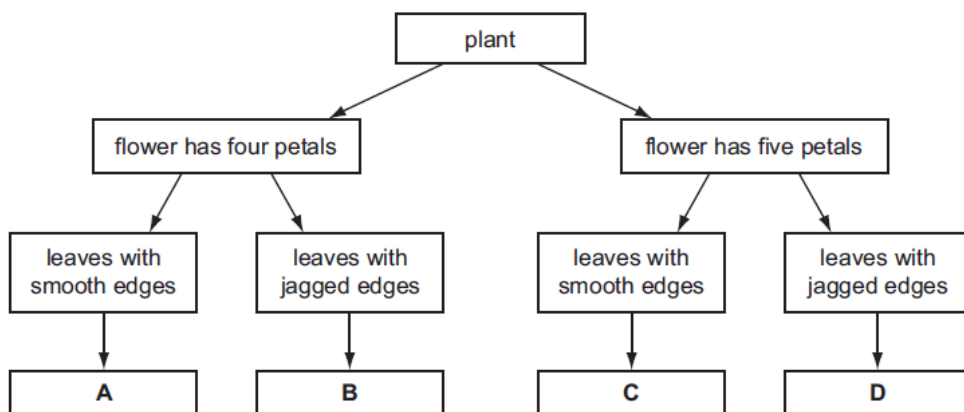
To which plant does the flower belong?

- A. plant P B. plant Q C. plant R D. plant T

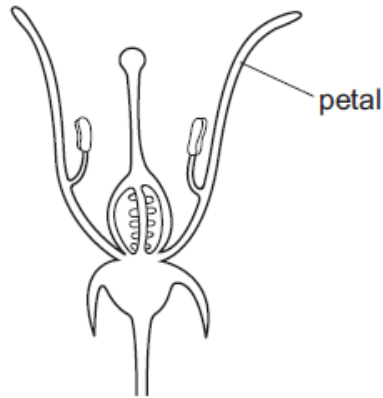
12. The diagram shows a flowering plant.



Use the key to identify the plant.



13. The diagram shows a section through a flower.



Using the key, identify this flower.

- 1. sepals present go to 2
- sepals absent go to 3
- 2. stamens attached to petals A
- stamens not attached to petals B
- 3. stigma above anthers C
- stigma below anthers D

14. The diagram shows an animal.



Use the key to identify the animal.

- 1 has legs go to 2
- has no legs go to 3
- 2 has a shell animal A
- has no shell animal B
- 3 has one muscular foot animal C
- has more than one foot animal D

15. Which animal is an annelid?

- 1 has legs go to 2
- has no legs go to 3
- 2 has six legs..... organism A
- has eight legs organism B
- 3 has a shell organism C
- has no shell organism D